

SS 3412 P

SS 3404 PMD

SUNSHINE® 3400 Series - Multi needle, double chainstitch flatbed machines with rear puller

TECHNICAL SPECIFICATIONS

Machine speed*
up to 4500 spm
Stitch type
401
Number of needles
4 - 12
Feed type
drop feed
Stitch length
1.5 - 3.6 mm
2.2 - 5.2 mm
Presser foot lift
12 mm
Needle type
UY 113 GS

3404 - Four needle, double chainstitch, flatbed machines. A rear puller is featured on this machine for smooth sewing operations.

3406 / 3412 - Multi needle, double chainstitch machines. A wide range of available gauges, combined with front and rear puller make these machines ideal for special operations.

MÁQUINAS DOBLE CADENETA CON PULLER DE BASE PLANA

3404 - Máquina de 4 agujas cadeneta doble, de base plana con puller para trabajos mas delicados.

3406 / 3412 - Máquina de múltiples agujas y cadeneta doble, con base plana. Una amplia gama de distancias de agujas distintas se puede pedir igual que varios modelos de embudos. El puller y / o alimentación de goma hace que la máquina sea perfecta para trabajos especiales.

DOPPELKETTENSTICHMASCHINEN

3404 - 4 Nadel Doppelkettstich-Flachbettmaschine mit Puller.

3406 / 3412 - 6 Nadel bzw. 12 Nadel Doppelkettstich-Flachbettmaschine mit Puller.

Diese Maschinen bieten große Variationsmöglichkeiten durch verschiedene Nadelabstände; Nadelabstand von Nadel zu Nadel 4,8 bzw. 6,4 mm.

MACHINE DOUBLE POINT DE CHAINETTE AVEC PULLER ARRIERE

3404 - Machine base plane 4 aiguilles à double point de chaînette. Le présence du puller arrière assure à cette machine une couture régulière.

3406 / 3412 - Machines base plane multi-aiguilles. Une gamme complète d'écartements disponibles et de guides combinés avec puller arrière et alimenteur frontal rendent ces machines idéales pour les opérations spéciales.

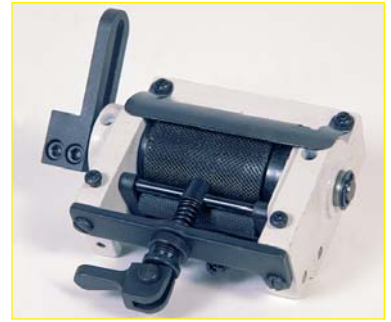
MACCHINA MULTI-AGHI - CATENELLA DOPPIA CON PULLER

3404 - Macchina a base piana 4 aghi, catenella doppia, con puller posteriore. Adatta per orlare inserendo un elastico all'interno dell'orlo o applicandolo all'esterno.

3406 / 3412 - Macchina a base piana multi-aghi, catenella doppia. La vasta gama di aghi disponibili, le misure, le guide, il puller e l'alimentatore rendono queste macchina le piu'adatte a qualsiasi lavorazione particolare.

Sunshine 3400 Series

High speed multi needle chainstitch machines with rear puller for elastic inserting and other specialized usages. The Sunshine 3400 machines are equipped with an automatic lubrication system.



MD = Metering Device (puller width = 50 mm)



Sunshine 3404 Series

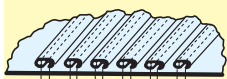
4 needle chainstitch for inserting elastics on boxer shorts, jogging suits etc.



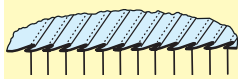
model	number of needles	number threads	total needle distance (mm)	stitch length (mm)	needle system	max sewing speed ★
3404 P puller	4	8	25.4	1.5 - 3.6	UY 113 GAS	4500
3404 PMD puller-metering device	4	8	25.4	1.5 - 3.6	UY 113 GAS	4200
3404 PMD puller-metering device	4	8	28.6	1.5 - 3.6	UY 113 GAS	4200
3404 PMD puller-metering device	4	8	31.8	1.5 - 3.6	UY 113 GAS	4200
3404 PMD puller-metering device	4	8	40.0	1.5 - 3.6	UY 113 GAS	4200

Multi-needle machines conveniently used in a wide variety of applications. A rear puller is also featured on these machines for smooth sewing operations.

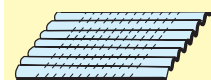
Sunshine 3406 - 3412 Series



PPA= puller tape attaching



PPT= puller pin tack



PS= puller shirring

model	number of needles	number threads	needle distance (mm)	stitch length (mm)	needle system	max sewing speed ★
3406 PTA puller+tape attaching	6	12	32.0 (6.4)	1.5 - 3.6	UY 113 GAS	3800
3408 PMD puller+metering device	8	16	44.8 (6.4)	1.5 - 3.6	UY 113 GAS	3800
3410 P puller	10	20	43.2 (4.8)	1.5 - 3.6	UY 113 GAS	4000
3410 P puller	10	20	57.6 (6.4)	1.5 - 3.6	UY 113 GAS	4000
3410 PMD puller+metering device	10	20	57.6 (6.4)	1.5 - 3.6	UY 113 GAS	3800
3412 P puller	12	24	52.8 (4.8)	2.2 - 5.2	UY 113 GAS	4000
3412 PS puller-shirring	12	24	52.8 (4.8)	2.2 - 5.2	UY 113 GAS	3800
3412 PS puller-shirring	12	24	70.4 (6.4)	2.2 - 5.2	UY 113 GAS	3800
3412 PTA puller+tape attaching	12	24	52.8 (4.8)	2.2 - 5.2	UY 113 GAS	3800
3412 PTA puller+tape attaching	12	24	70.4 (6.4)	2.2 - 5.2	UY 113 GAS	3800
3412 PMD puller+metering device	12	24	52.8 (4.8)	2.2 - 5.2	UY 113 GAS	3800
3412 PMD puller+metering device	12	24	70.4 (6.4)	2.2 - 5.2	UY 113 GAS	3800

★ Max. sewing speed (in spm.) depends on type of operation and/or materials to be sewn.

The GLOBAL® Selection is brought to you by:

GLOBAL® is a trademark of the Global International Corporation, the people that carefully organize the supply of spareparts before they launch each product.

When ordering parts please specify:
 1 machine model
 2 part numbers